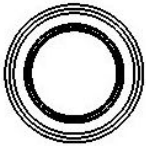
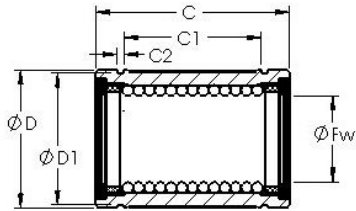




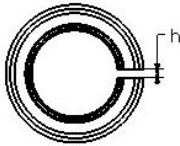
# NTN-CPC Australia Pty Ltd

## AST LBE 8 UU linear bearings

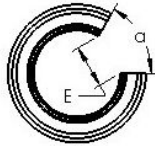
Bearing No. LBE 8 UU



STANDARD



ADJUSTABLE



OPEN

LBE 8 UU Bearing 2D drawings and 3D CAD models

Bore Diameter	8 mm
Bearing Type	sealed, standard type
Dynamic Load Rating (Cr)	121
Static Load Rating (Cor)	255
Shaft Dia. (Fw)	8.000
Outside Dia. (D)	16.000
Length ( C )	25.000
Groove-to-groove length (C1)	14.000
Groove Width (C2)	1.100
Groove Dia. (D1)	14.300
Weight (g)	17.00
Material	52100 chrome steel, or equivalent