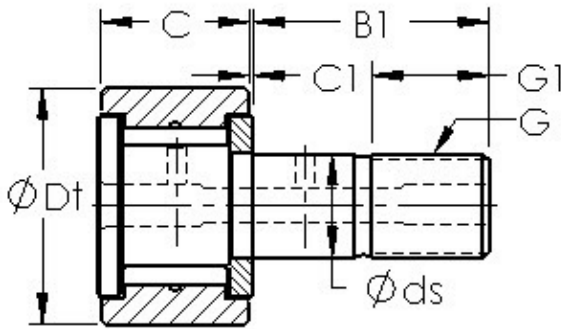




NTN-CPC Australia Pty Ltd



AST CF32 needle roller bearings

Bearing No. CF32

Bearing Type	Full Complement
Dynamic Load Rating (Cr)	7,400
Static Load Rating (Cor)	11,200
Max Speed (Grease) (X1000 RPM)	2,300
Tire Outer Dia. (Dt)	2.000
Stud Dia. (ds)	0.875
Tire Width (C)	1.250
Tire Washer Width (C1)	0.031
Total Length (B)	3.280
Stud Length (B1)	2.000
Threads (G) - 7/8-14 UNF	7/814 UNF
Thread Length (G)	1
Weight (g)	613.00
Material - Stud and Roller head: Hardened carbon steel alloy, Needle rollers	52100 Chrome steel or equivalent

CF32 Bearing 2D drawings and 3D CAD models